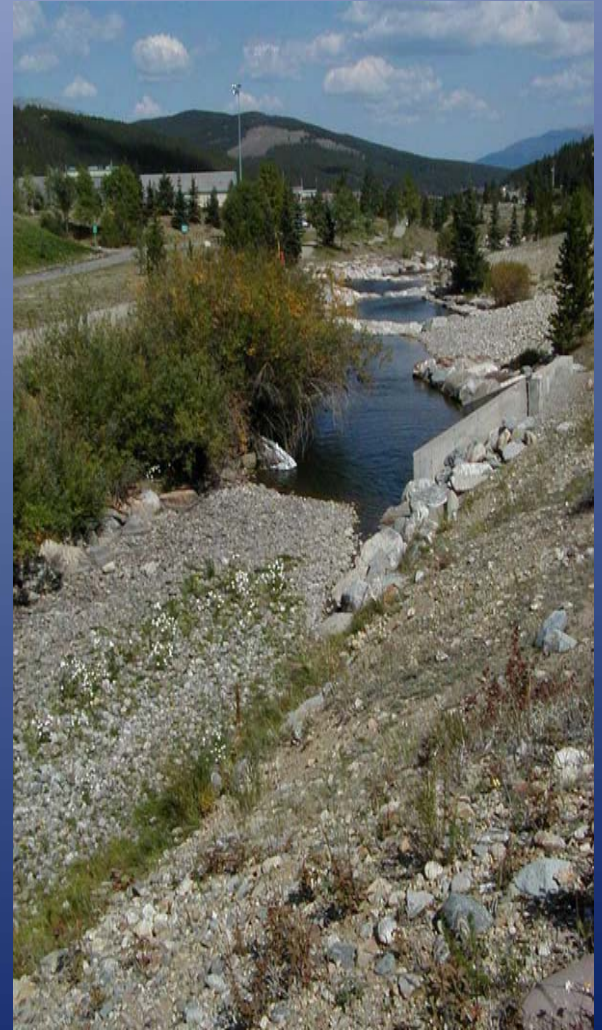


CBRT Nonconsumptive Needs Assessment

- Legislative mandate to determine Non-Consumptive needs
- Mapping of known stream and river reaches where NC flows are a problem
- WSRA Grant to develop Watershed Flow Evaluation Tool, to be used with Site Specific studies as needed
- Roaring Fork and Fountain Creek pilot projects
- Identifying site-specific issues



Purpose of Watershed Flow Evaluation Tool

- Examine regional approaches for establishing environmental flow targets for the Basin Roundtable Nonconsumptive Needs Assessments
- Apply recent research and methods developed under the Ecological Limits of Hydrologic Alteration (ELOHA) framework (Poff, et al In Press)

Difference between Site-Specific Quantification and the Watershed Flow Evaluation Tool

- Site-specific quantification can tell you a lot of things about a smaller geographic extent such as a river reach
- Watershed Flow Evaluation Tool can tell you some things about a larger geographic extent or watershed scale
- The two methods can be complementary of one another

SCIENTIFIC PROCESS

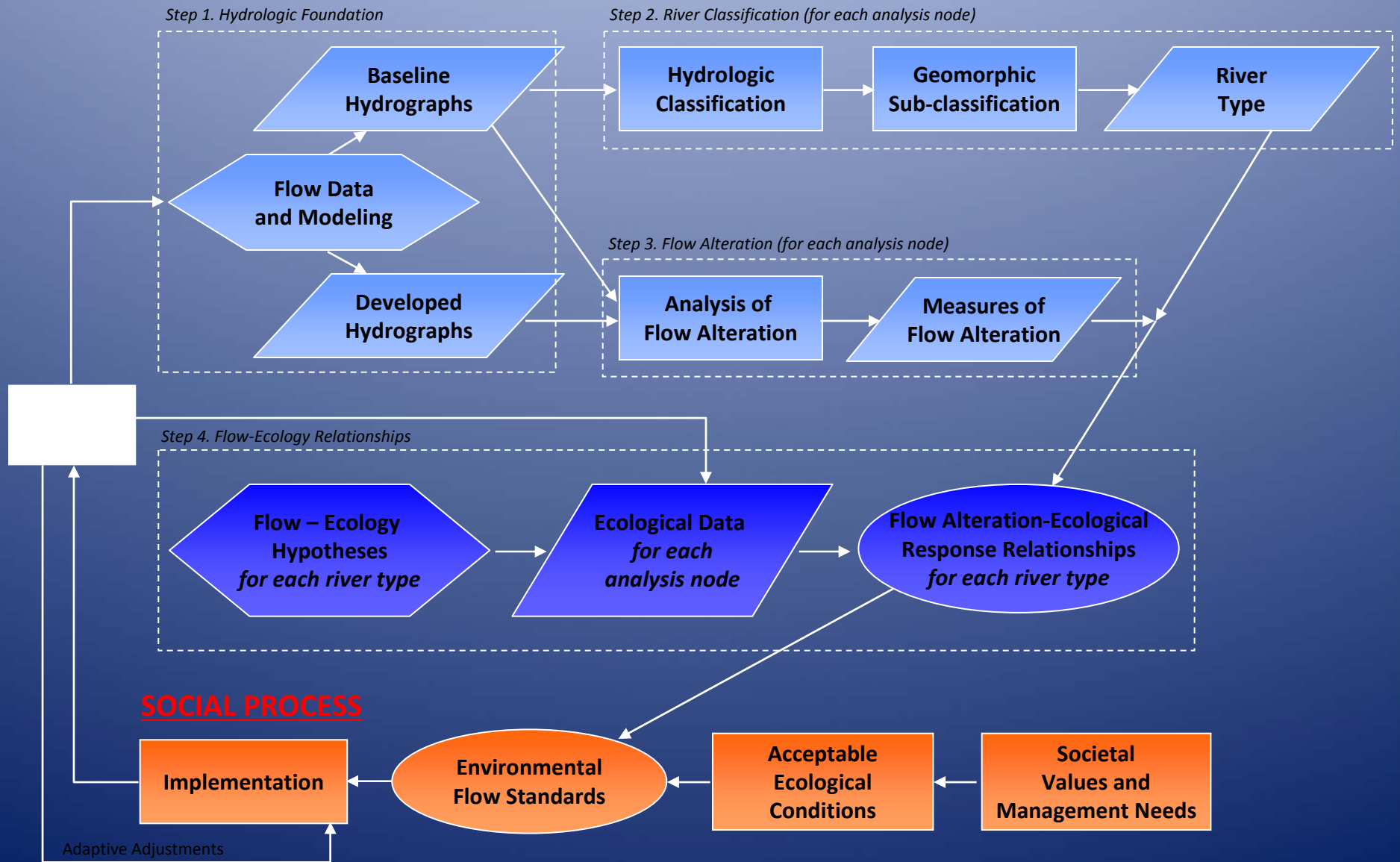
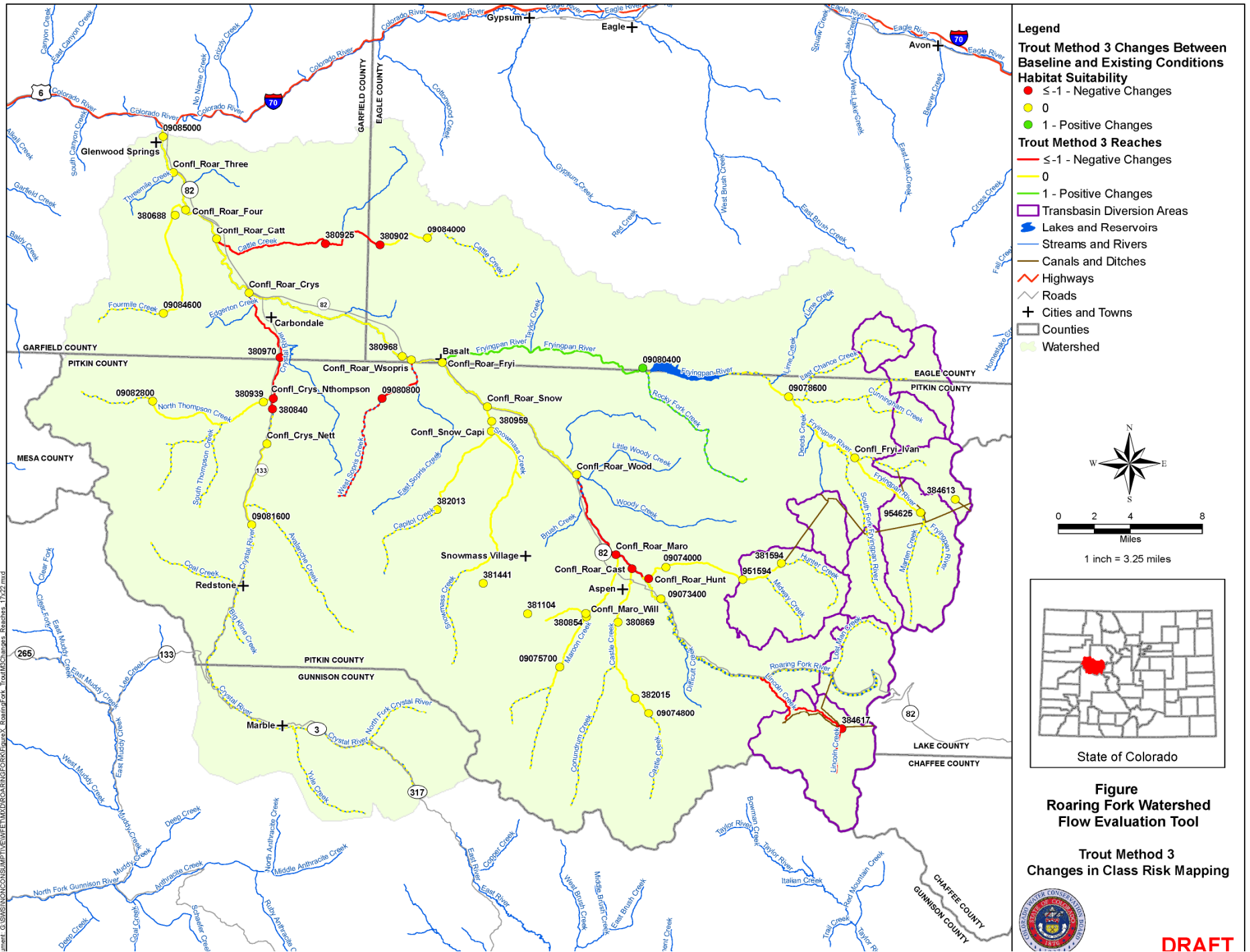


Figure 1



met: G:\SIN\CONSUMPTIVE\VIEW\ET\MWD\ROARING_FORK\FigureX_RoaringFork_TroutM3Changes_Reaches_1227.mxd

Site Specific Approach

- Objective: Demonstrate use of site specific data to evaluate NCNA flows
- Used existing PHABSIM data for the Roaring Fork at the Tree Farm, near Emma, Colorado
- Site established as part of the Fryingpan Fishery study
- Representative of the Roaring Fork from Fryingpan River downstream to the Crystal River

What's Next

- Final Pilot Project report due at the end of June
- Basin Roundtable to vote on continuation of WFET work at June meeting.
- Colorado River site specific work in conjunction with Wild & Scenic efforts this summer and fall
- Continue to refine WFET with data from Colorado River
- Townhall meetings to get public input
- Apply WFET in identified areas basin wide and start to quantify Non-Consumptive flow needs