

# Water Quality Monitoring

In Grand County

2010

# Northern & 3 Lakes Technical Committee

## West Slope Program Additions

- 3 Lakes Model Updates
- NCWCD/USBR
  - Nutrients every other week 3 Lakes inflows/interflows
  - Temp/Conductivity in 3 Lakes inflows/interflows (GCWIN)
  - Flow monitoring
    - Earlier operation, addition of Stillwater & Arapaho Creek
  - SMR Nutrient Profiles (4/low DO event)
- CRWCD/GC/USGS
  - ADVN in channel w/turbidity, Chl-a fluorescence, temp (USGS)

M  
i  
c  
r  
o  
c  
y  
s  
t  
i  
n  
T  
O  
X  
i  
n

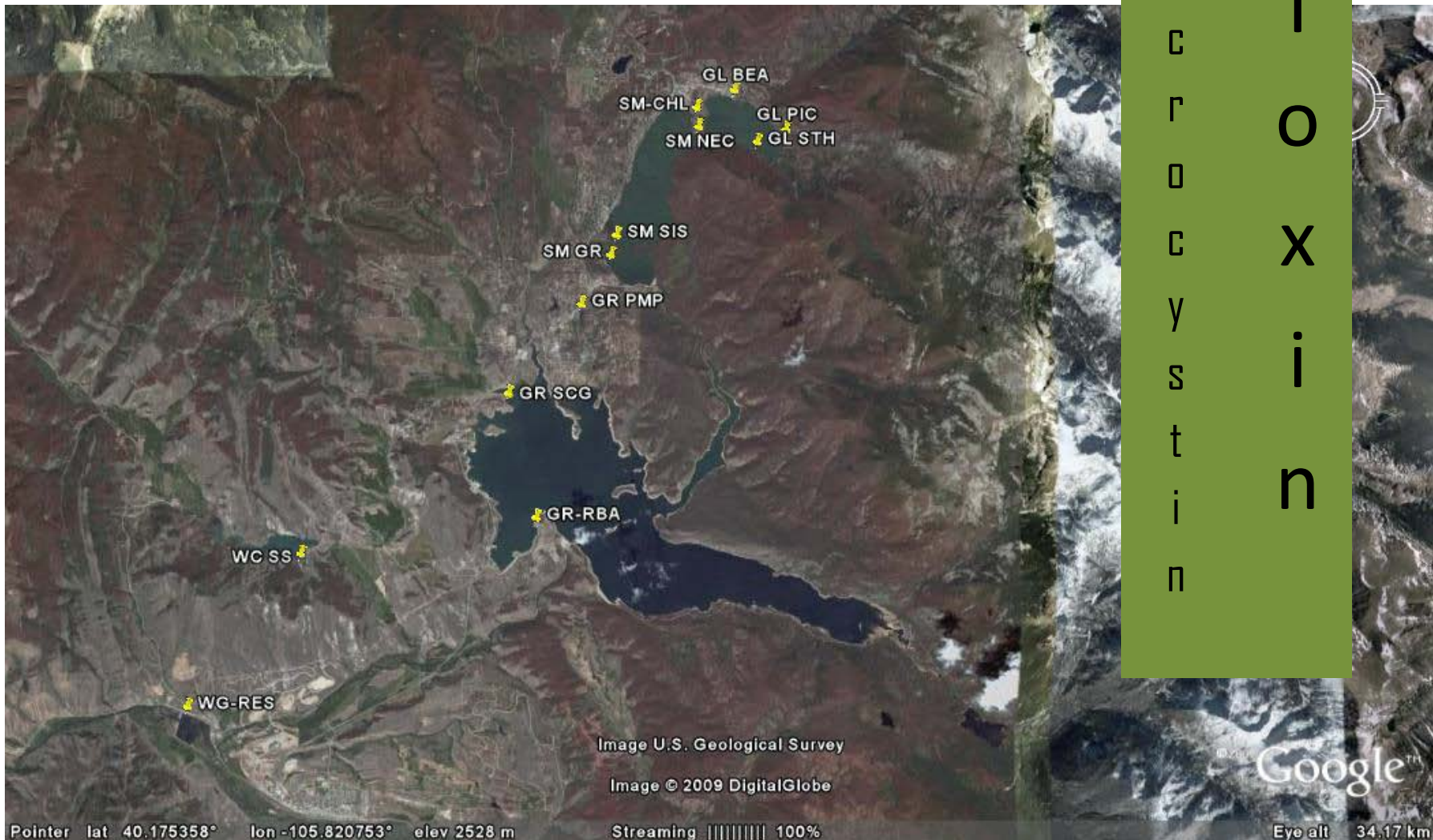


Image U.S. Geological Survey

Image © 2009 DigitalGlobe

Pointer lat 40.175358° lon -105.820753° elev 2528 m

Streaming ||||| 100%

Eye alt 34.17 km

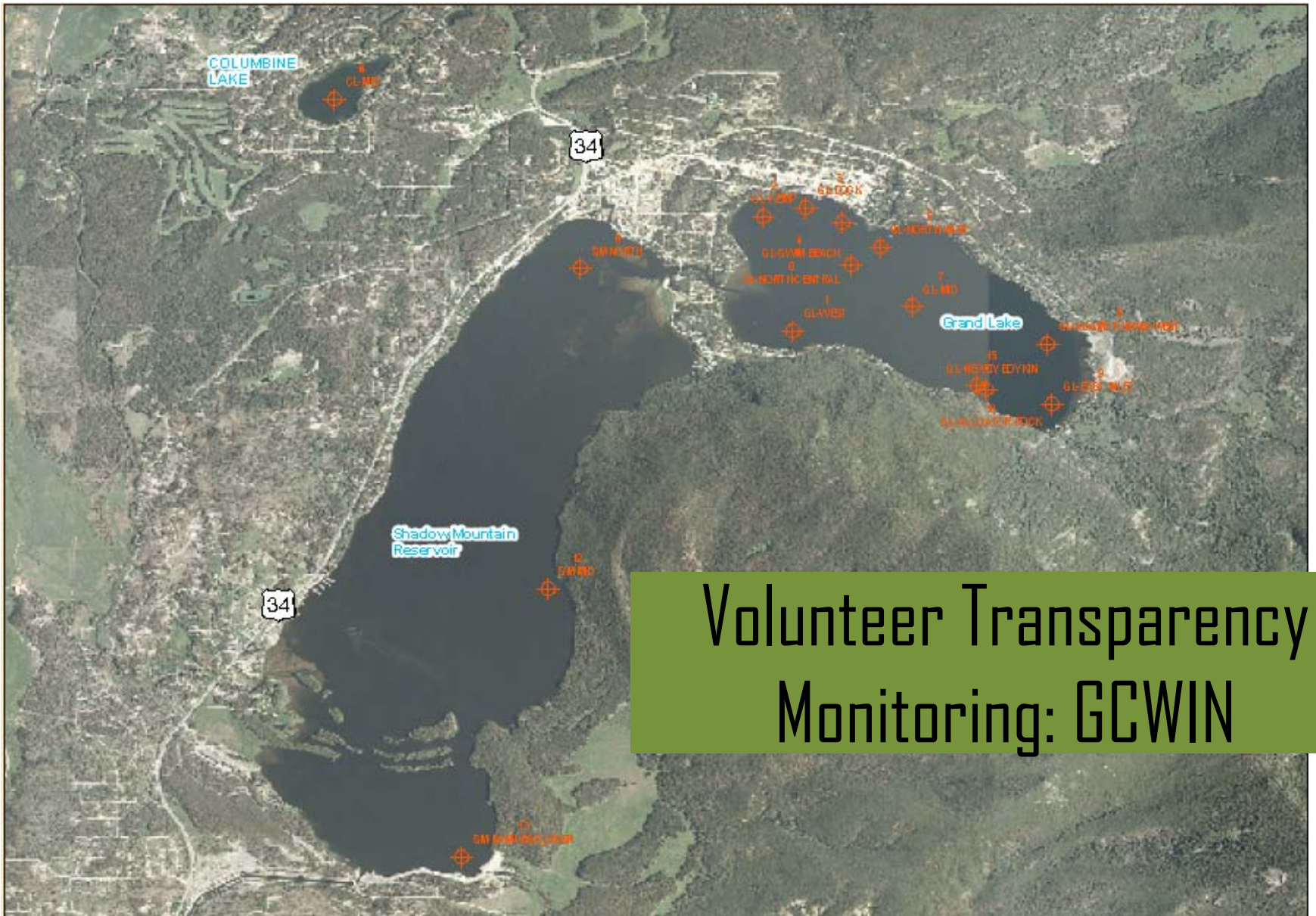
## Concentrations of Toxins and Taste-and-Odor Compounds May Vary by Orders of Magnitude at Different Sample Locations Within a Lake

Microcystin: 13  $\mu\text{g/L}$   
Geosmin: 0.25  $\mu\text{g/L}$

Microcystin: 4  $\mu\text{g/L}$   
Geosmin: Not Detected



Samples collected about 50 m apart



# Volunteer Transparency Monitoring: GCWIN

G  
r  
a  
n  
d  
L  
a  
k  
e  
T  
r  
a  
n  
s  
p  
a  
r  
e  
n  
c  
y







# Regulation 93 Temperature Issues

