



2008 – Division 4

Bob W. Hurford
Assistant Division Engineer

Gunnison River Basin

State Engineer's Office



Dick Wolfe, State Engineer



Mike Sullivan
Deputy State Engineer



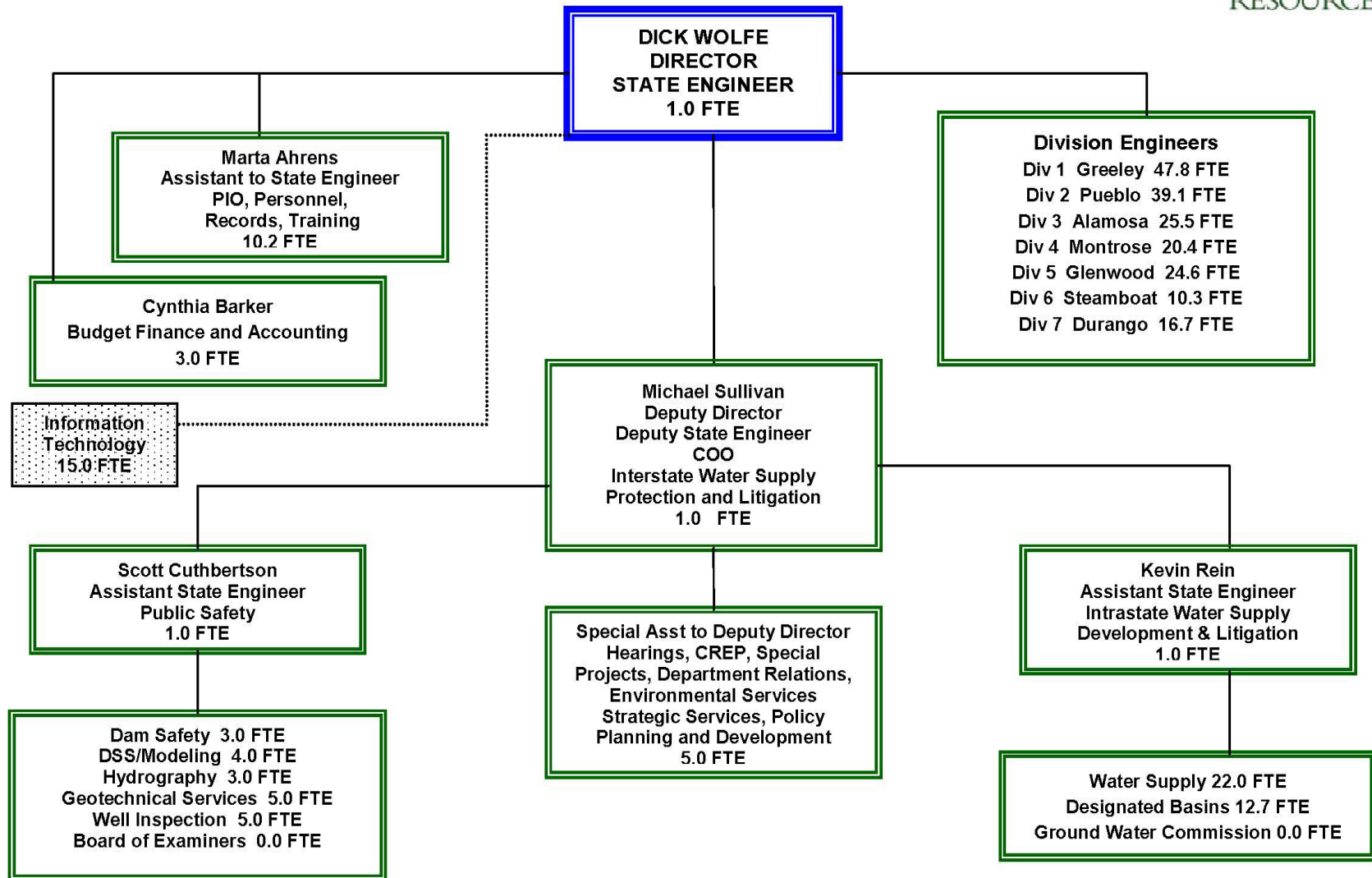
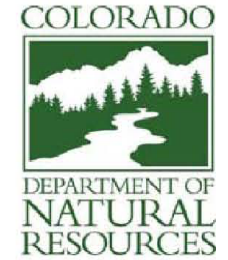
Scott Cuthbertson
Assistant State Engineer



Kevin Rein
Assistant State Engineer



COLORADO DIVISION OF WATER RESOURCES PROGRAM ORGANIZATIONAL CHART



Snowpack Update Last Year

S N O W - U P D A T E

Based on Mountain Data from NRCS SNOTEL Sites

As of MONDAY: MAY 12 , 2008

BASIN	ELEV.	SNOW WATER EQUIVALENT		
		Current	Average	% Avg

GUNNISON RIVER BASIN

BUTTE	10160	16.2	9.1	178
COCHETOPA PASS	10020	.2	-M	*
PARK CONE	9600	10.7	2.5	428
PORPHYRY CREEK	10760	14.6	11.8	124
SCHOFIELD PASS	10700	54.8	34.0	161
SLUMGULLION	11440	15.3	12.0	128
MC CLURE PASS	9500	15.3	8.8	174
MESA LAKES	10000	16.5	14.0	118
OVERLAND RES.	9840	13.8	6.5	212
PARK RESERVOIR	9960	34.0	29.5	115
COLUMBINE PASS	9400	.4	5.5	7
IDARADO	9800	11.6	5.7	204
RED MOUNTAIN PASS	11200	30.0	25.5	118

Basin wide percent of average 141

Snowpack Update This Year

S N O W - U P D A T E

Based on Mountain Data from NRCS SNOTEL Sites

As of WEDNESDAY: **MAY 13 , 2009**

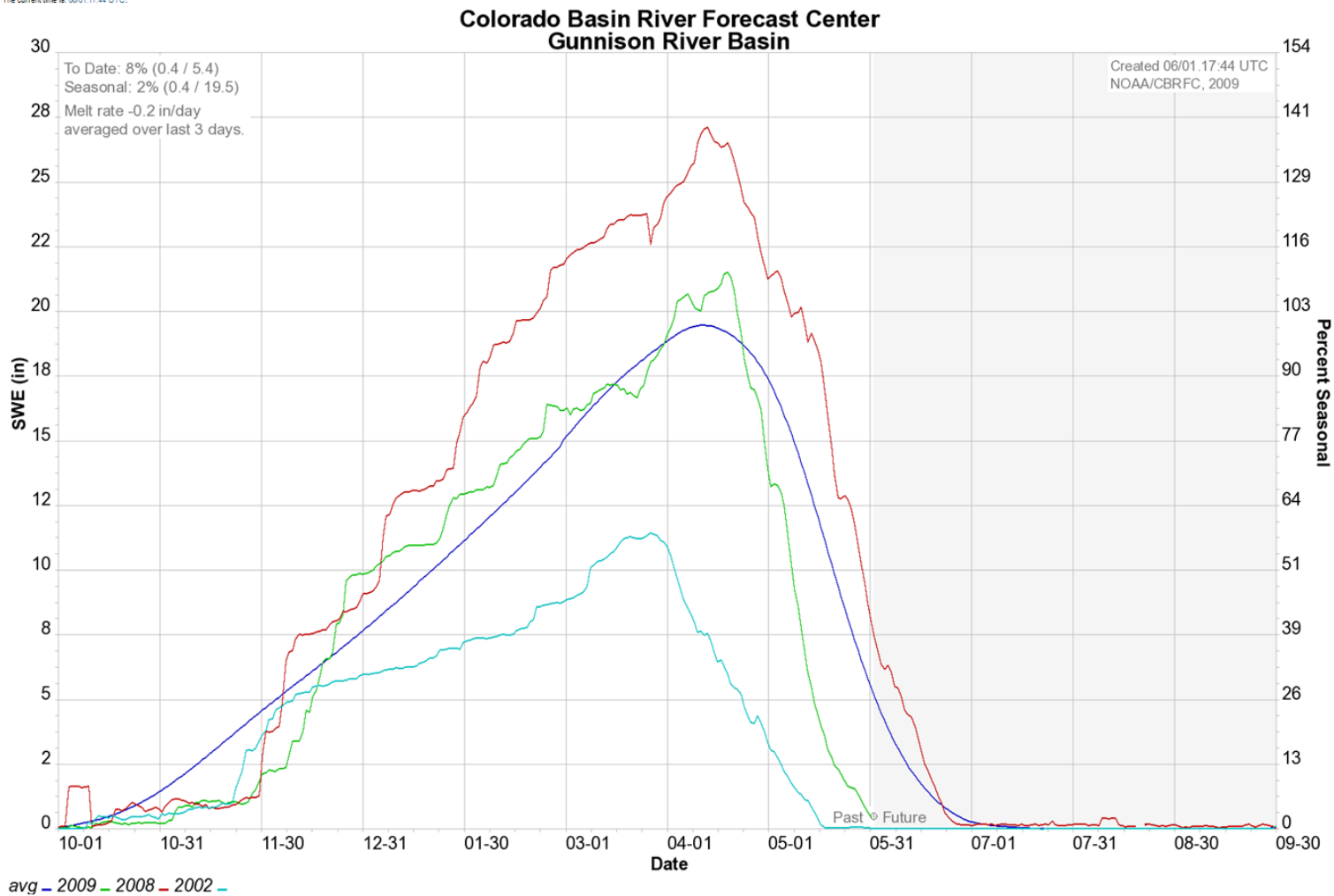
BASIN	ELEV.	SNOW WATER EQUIVALENT		
		Current	Average	% Avg

GUNNISON RIVER BASIN				
BUTTE	10160	.1	9.1	1
COCHETOPA PASS	10020	.1	-M	*
PARK CONE	9600	.4	2.5	14.3
PORPHYRY CREEK	10760	2.2	11.8	19
SCHOFIELD PASS	10700	54.8	34.0	85
SLUMGULLION	11440	2.0	12.0	17
MC CLURE PASS	9500	.1	8.8	1
MESA LAKES	10000	5.9	14.0	42
OVERLAND RES.	9840	.2	6.5	3
PARK RESERVOIR	9960	19.8	29.5	67
COLUMBINE PASS	9400	.1	5.5	2
IDARADO	9800	.0	5.7	0
RED MOUNTAIN PASS	11200	13.3	25.5	52

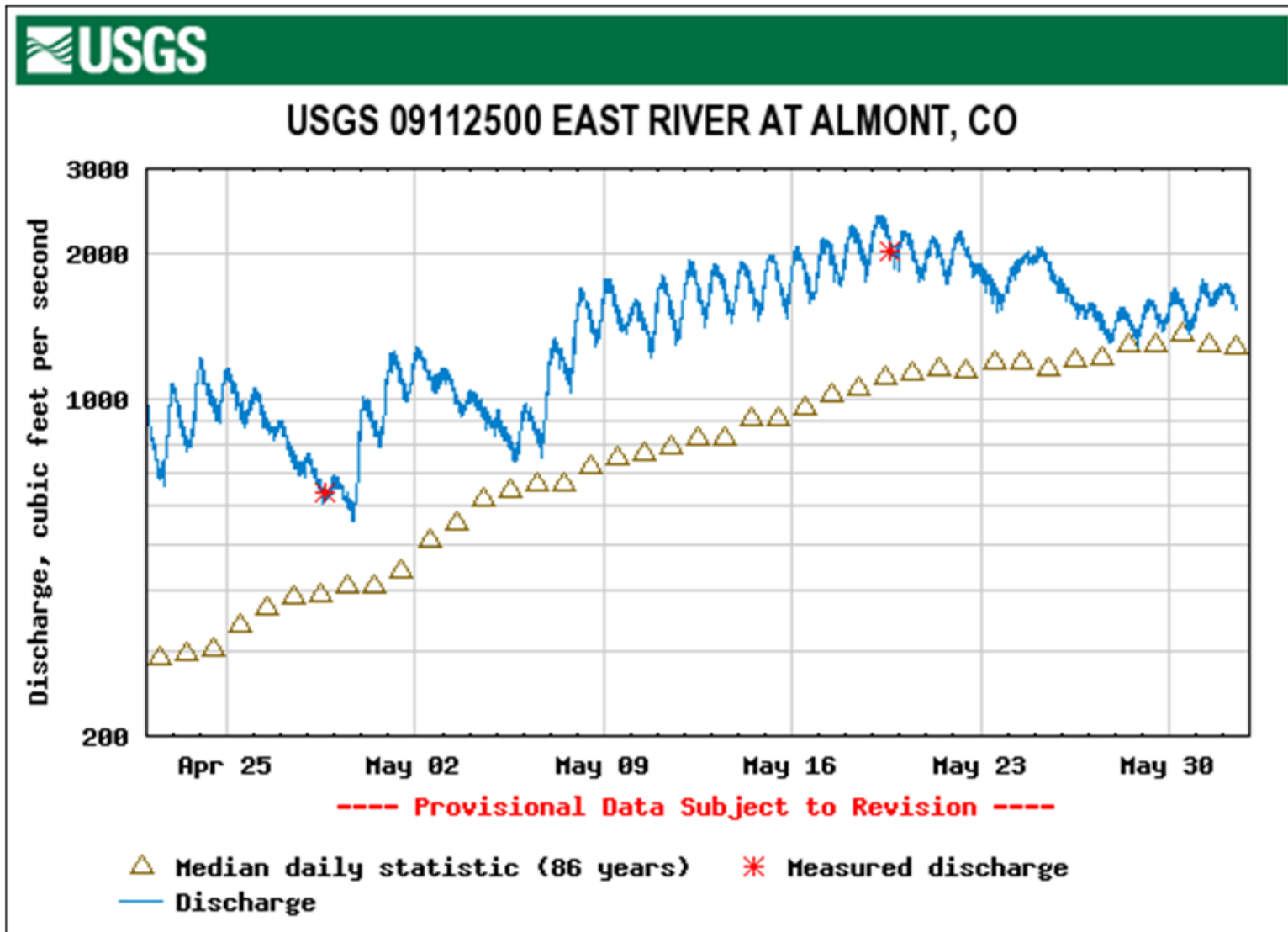
Basin wide percent of average 44

Snowpack Update Graphically

CBRFC Main > Snow > Station
Gunnison River Basin Multiple Station Snotel Plot
View station in google maps or google earth. [New!](#)
The current time is: 06:01:17.44 UTC.



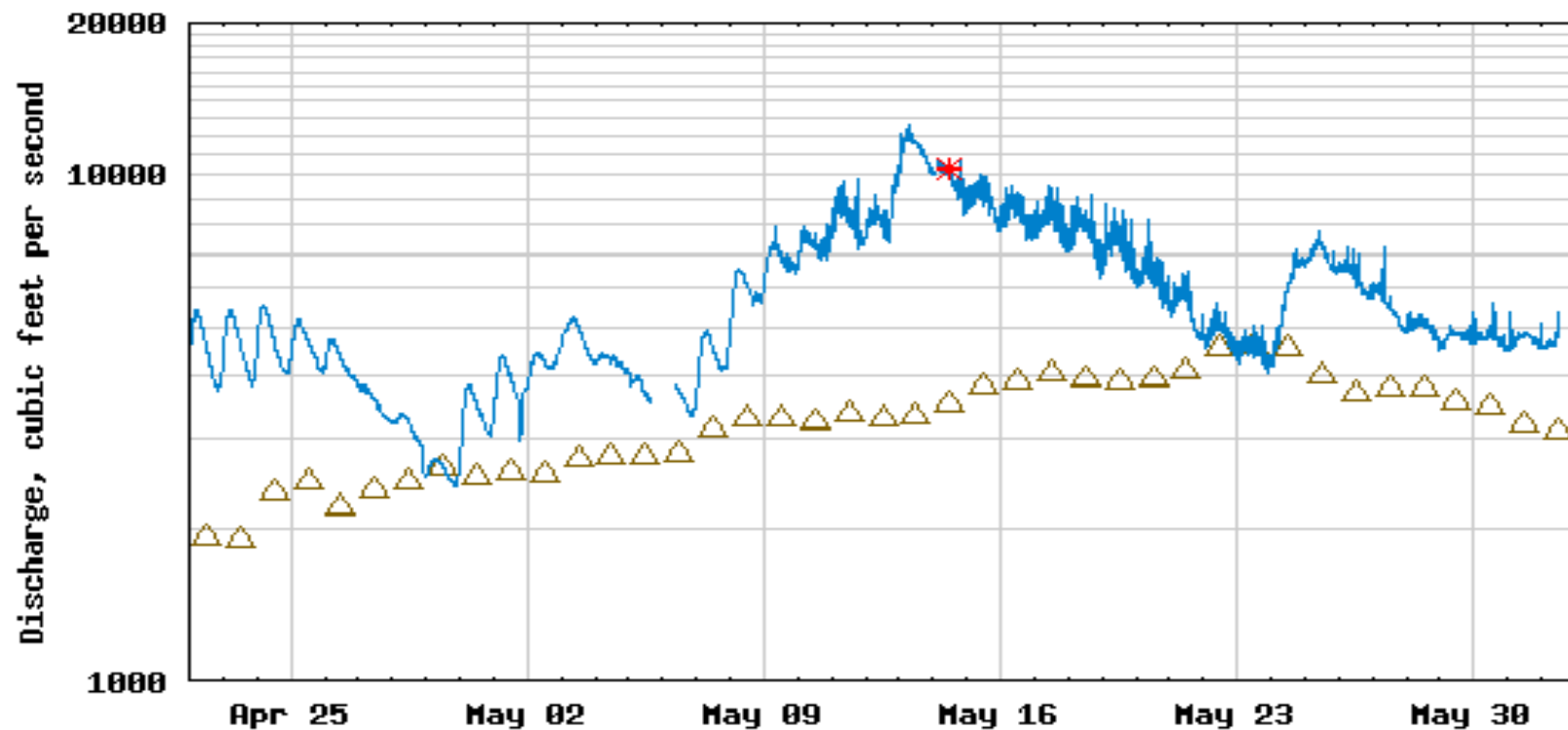
Spring 2008 Streamflow



Spring 2008 Streamflow



USGS 09144250 GUNNISON RIVER AT DELTA, CO.

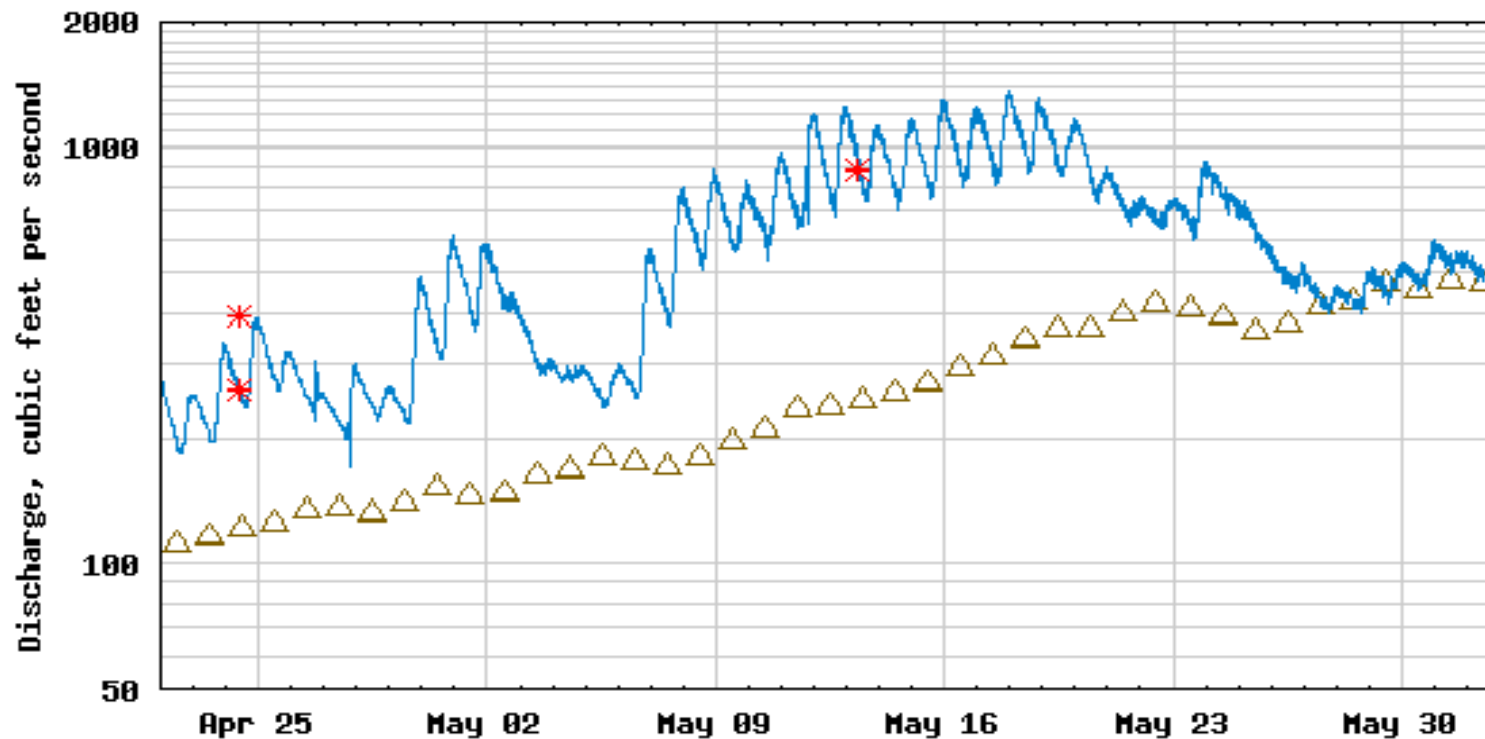


△ Median daily statistic (32 years) * Measured discharge
— Discharge

Spring 2008 Streamflow



USGS 09146200 UNCOMPAHGRE RIVER NEAR RIDGWAY, CO.



----- Provisional Data Subject to Revision -----

- △ Median daily statistic (50 years)
- * Measured discharge
- Discharge

Dust on Snow Silverton 2009



Dust on Snow Grand Mesa 2009



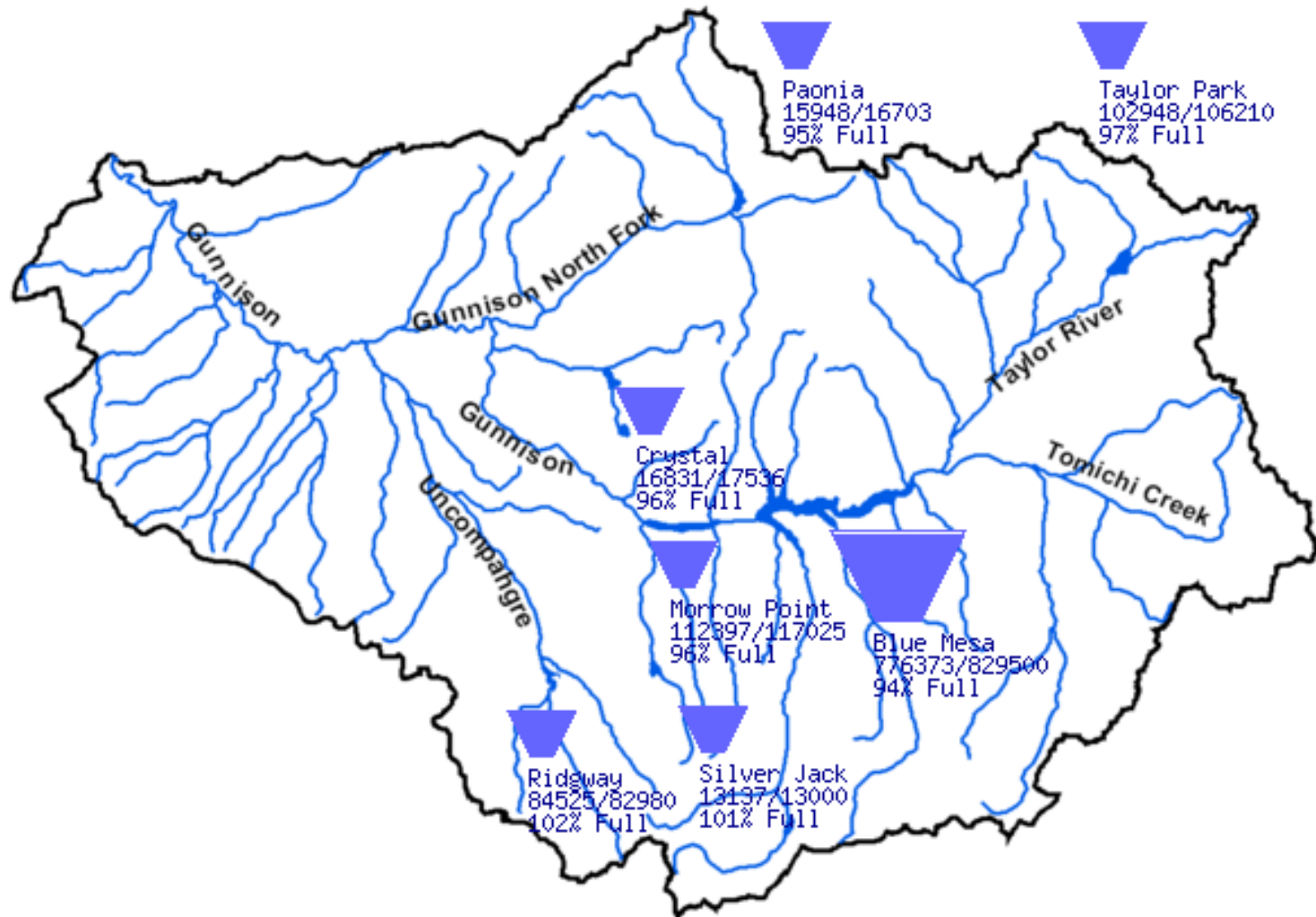
Dust on Snow Grand Mesa 2009



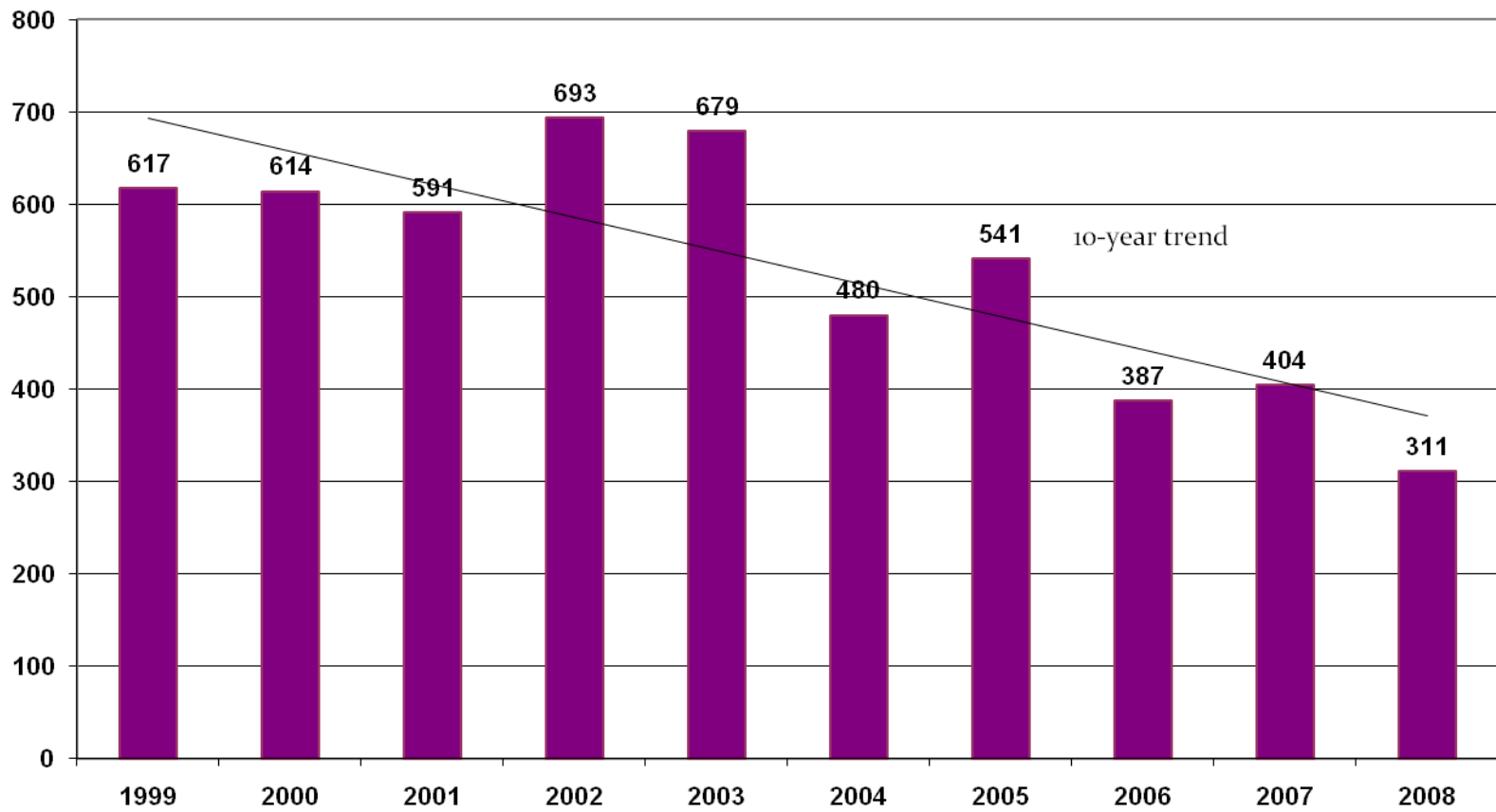
Tea-Cup Diagrams

Data Current as of:
05/31/2009

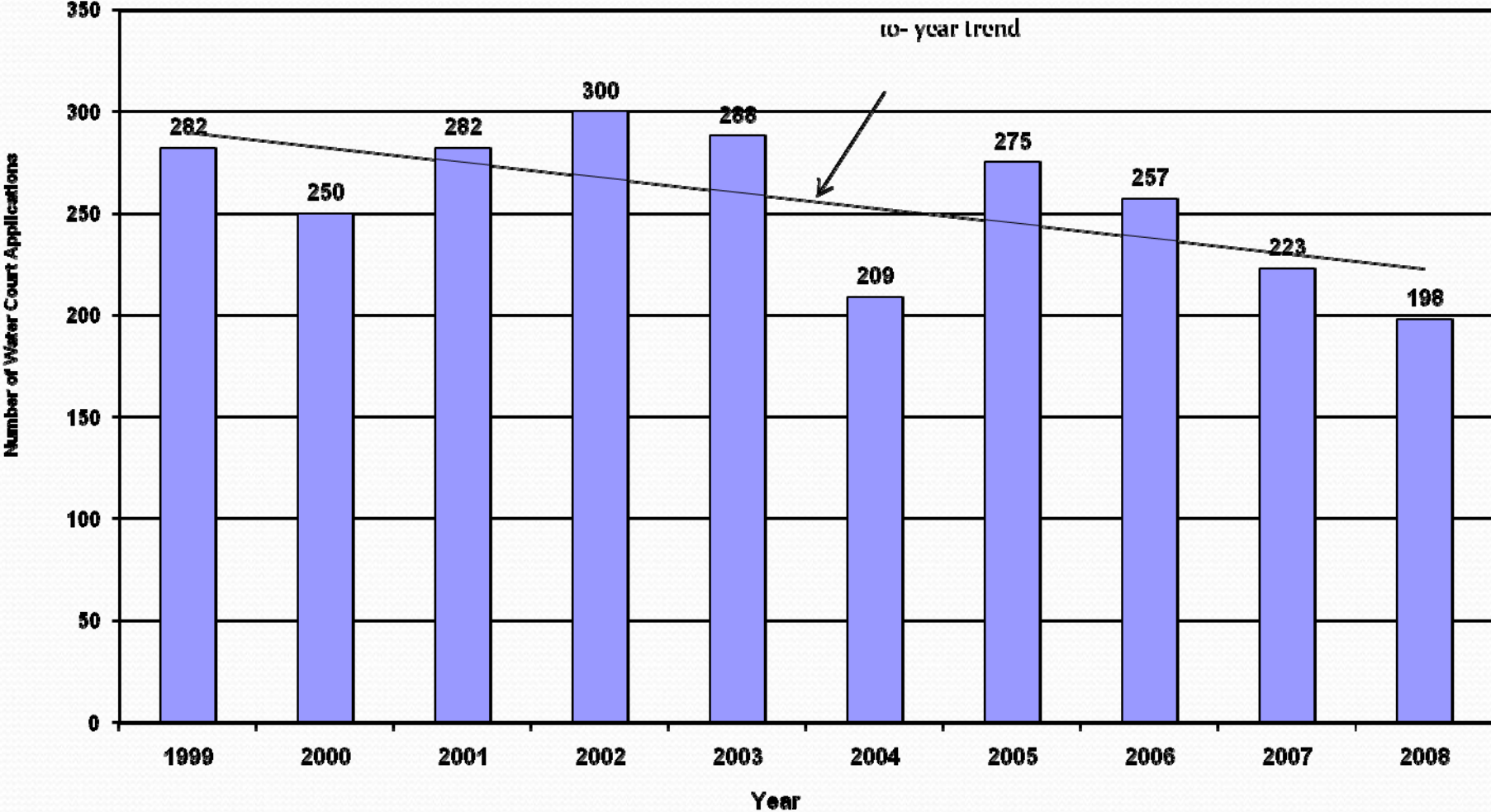
Gunnison River Basin, CO



**Total Number Permits Issued for Division IV
1998 - 2008**



Division 4 Water Court Applications by Year



The End

