

RECLAMATION

Managing Water in the West

Colorado-Big Thompson Project Green Mountain Reservoir Operations Water Year 2009

Presented by

Ron Thomasson

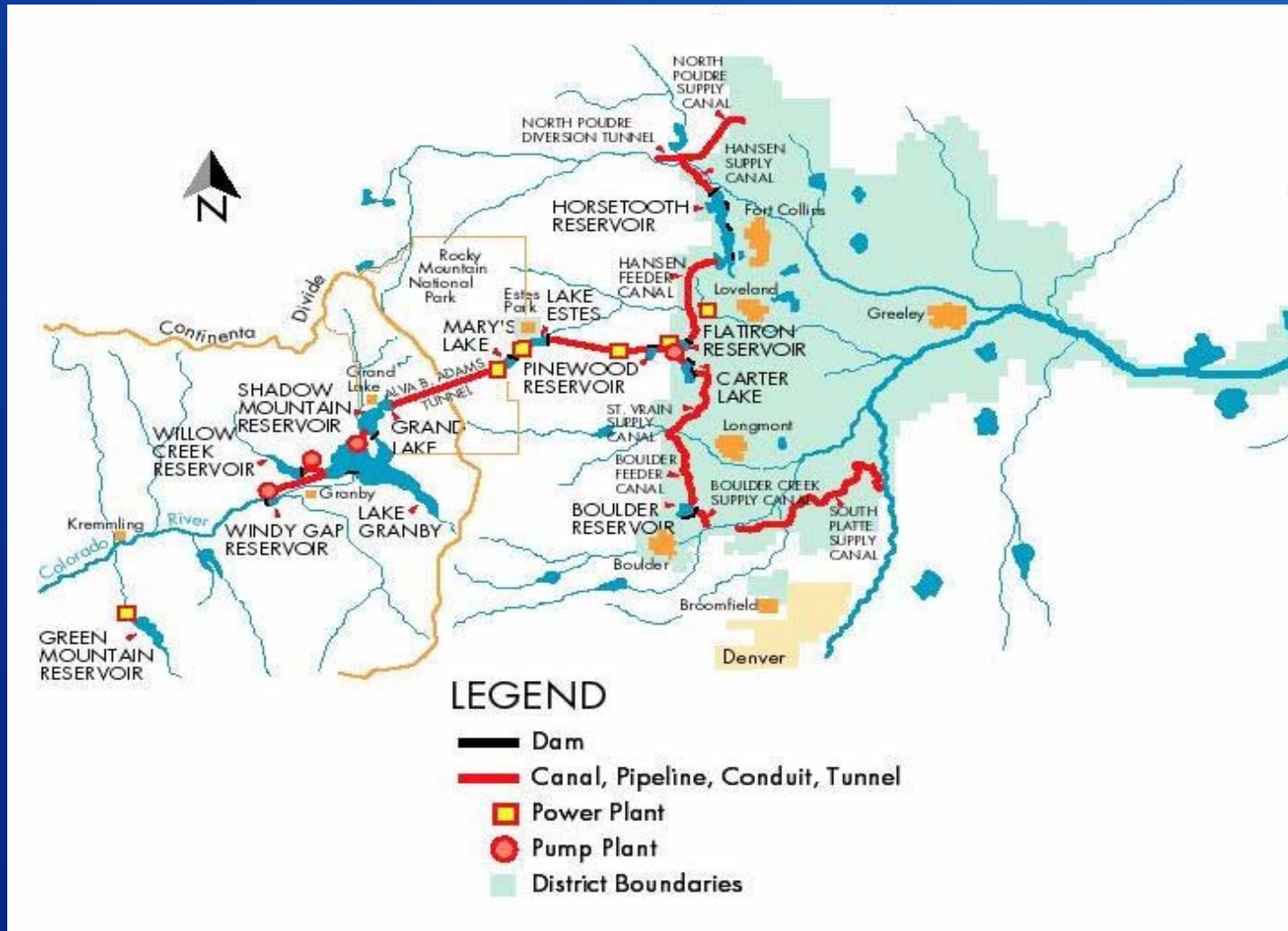
Water Resources Engineer

Eastern Colorado Area Office



U.S. Department of the Interior
Bureau of Reclamation

Colorado-Big Thompson Project



RECLAMATION

Green Mountain Reservoir Replacement Pool

- 52,000 acre-feet
- Used to replace for out-of-priority depletions at Granby and Willow Creek Reservoirs



*Green Mountain Reservoir
in late summer 2003*

RECLAMATION

Green Mountain Reservoir Power Pool

- 5,000 acre-feet for Silt Project replacement
- Up to 66,000 acre-feet for pre-1977 West Slope domestic and irrigation rights
- Unused portion of 66,000 acre-feet available for endangered fish
- Up to 20,000 acre-feet for contracts



*Green Mountain Reservoir
in late summer 2003*

RECLAMATION

Green Mountain Reservoir Operations, May-July

- Fill reservoir by mid July
- Avoid spilling the reservoir (keep all releases running through the generators – max release approx. 1400 cfs)
- Participate in Coordinated Reservoir Operations late May/ early June



*Green Mountain Dam and
Reservoir in early spring*

RECLAMATION

Green Mountain Reservoir Operations, August-October

- Bypass inflow to meet downstream senior water rights (Shoshone/Grand Valley)
- Replacement releases for C-BT out-of-priority depletions
- Releases to the West Slope Beneficiaries and for endangered fish
- Contract releases



*Green Mountain Reservoir
in late summer 2003*

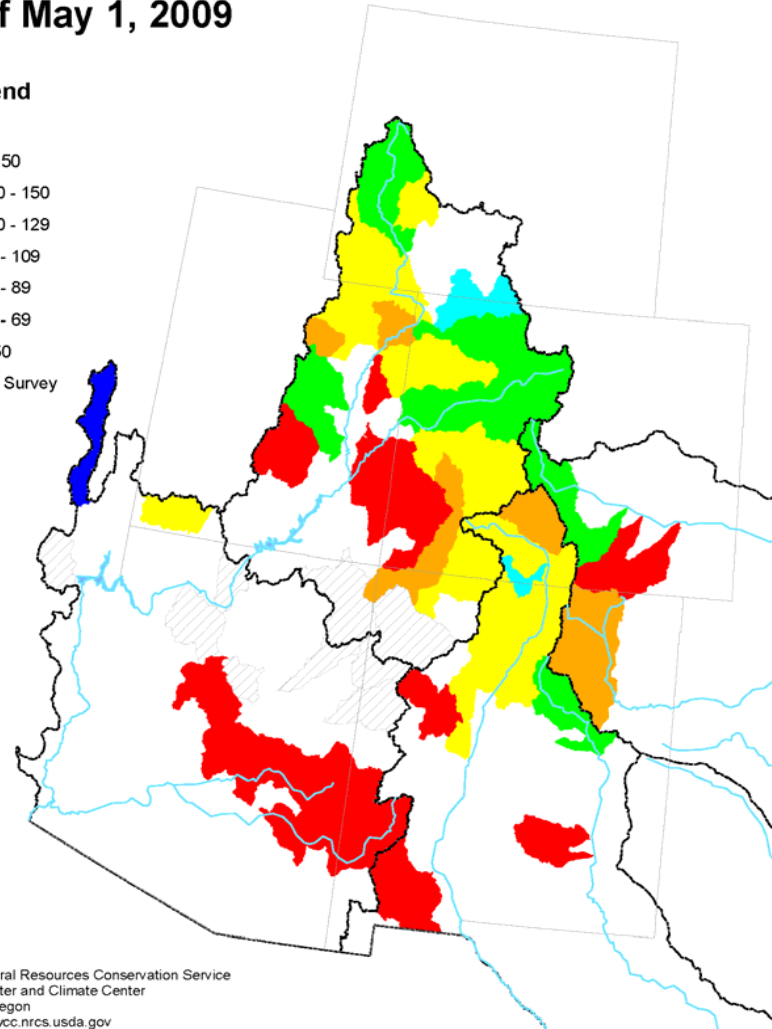
RECLAMATION

Arkansas, Colorado and Rio Grande Basin Mountain Snowpack as of May 1, 2009

Legend

percent

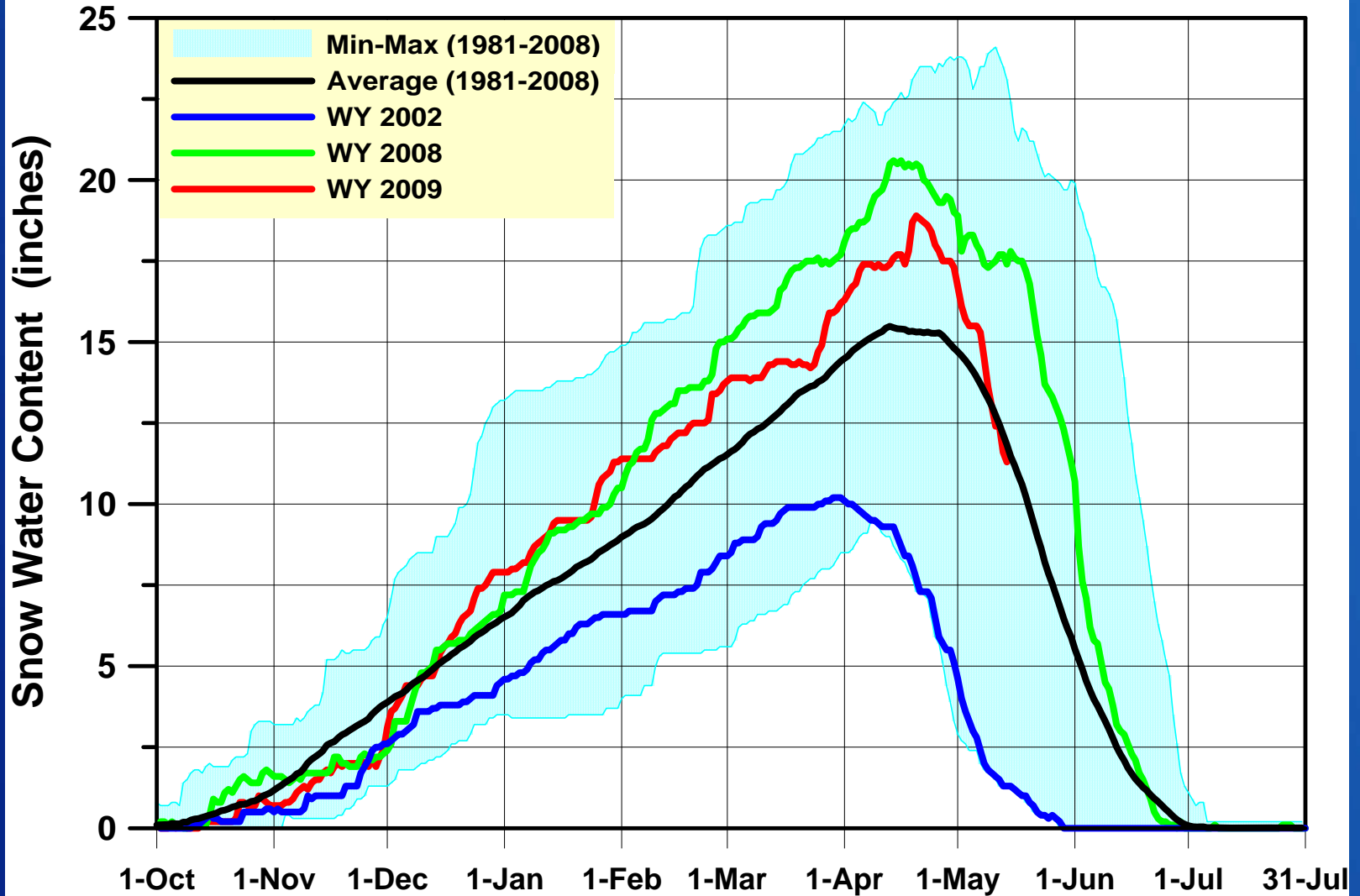
- > 150
- 130 - 150
- 110 - 129
- 90 - 109
- 70 - 89
- 50 - 69
- < 50
- No Survey



Prepared by
USDA, Natural Resources Conservation Service
National Water and Climate Center
Portland, Oregon
<http://www.wcc.nrcs.usda.gov>

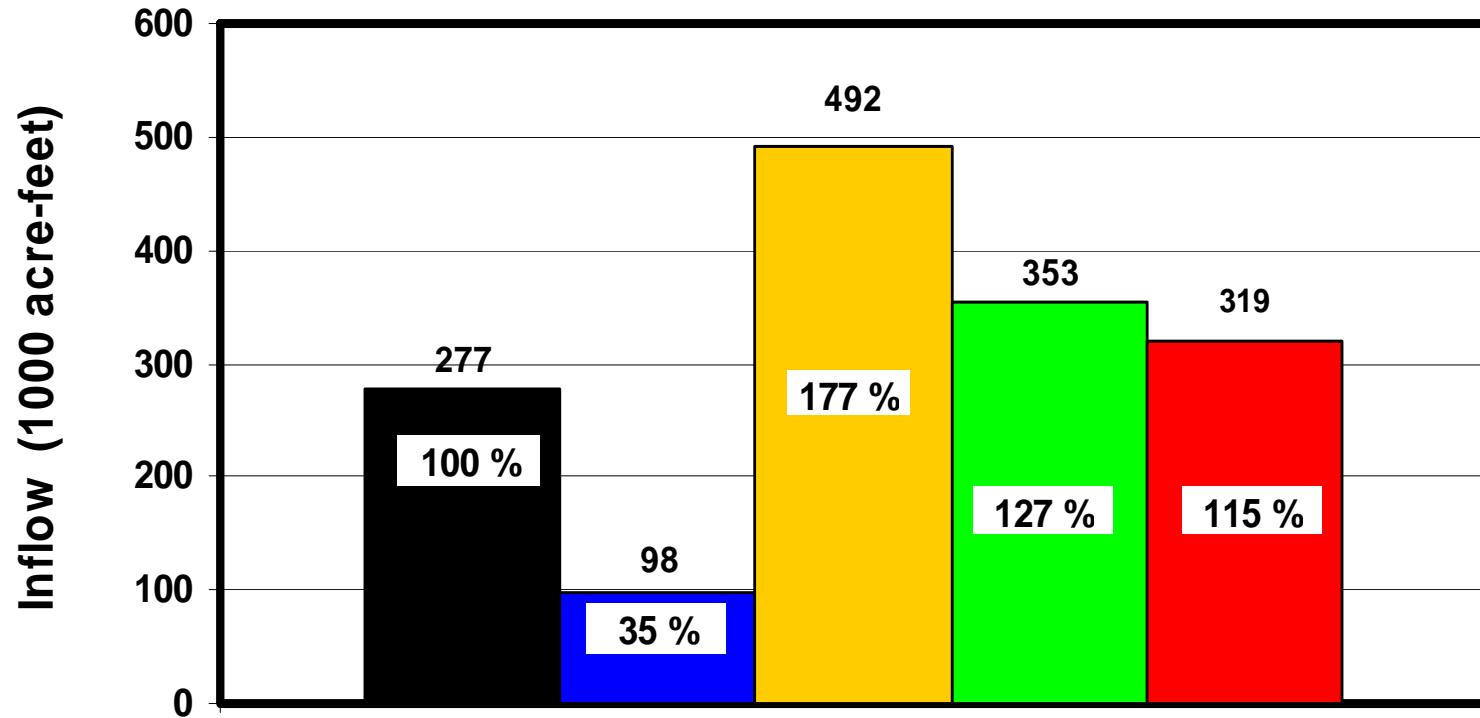
RECLAMATION

GREEN MOUNTAIN RESERVOIR WATERSHED SNOWPACK



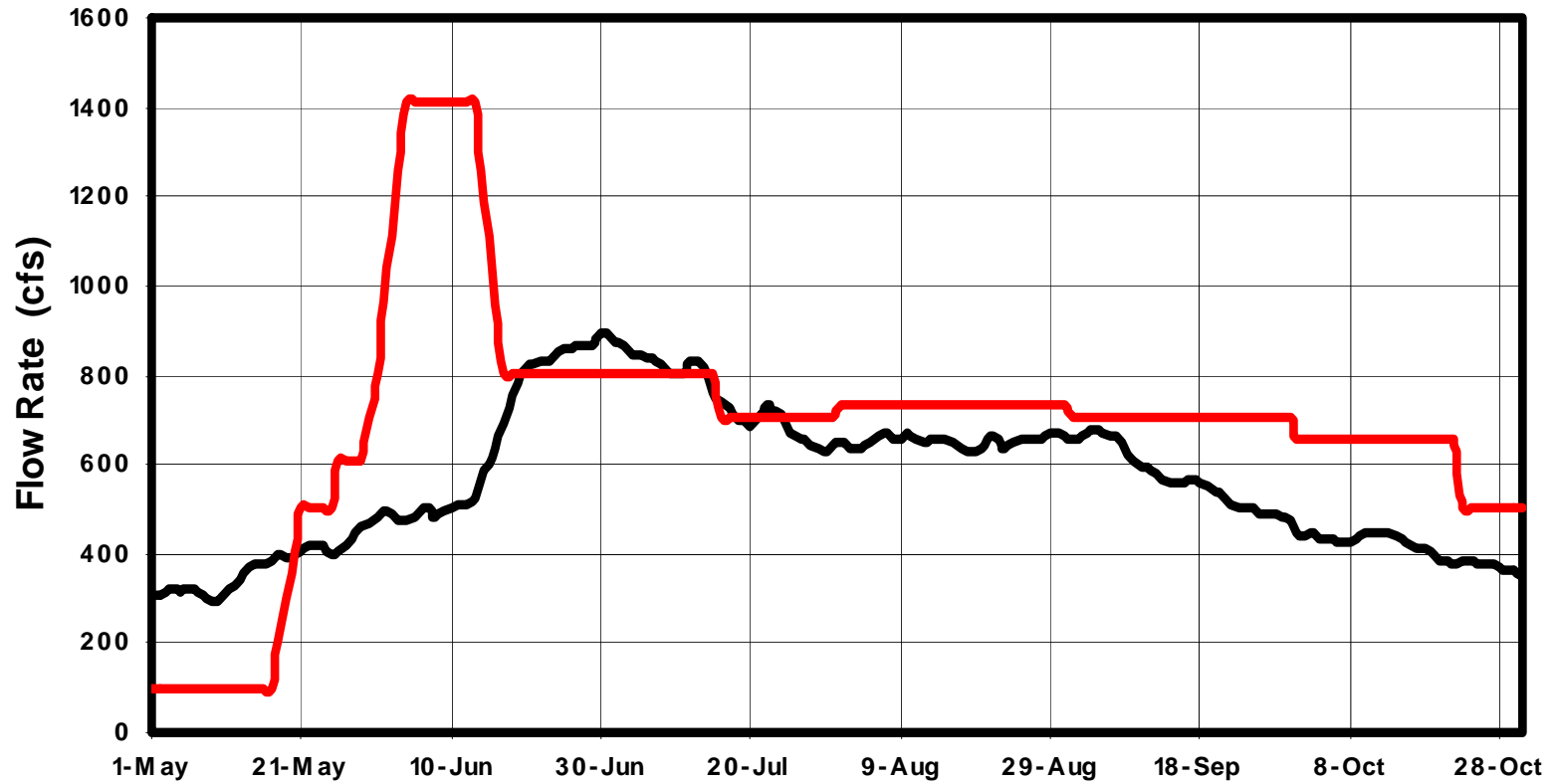
RECLAMATION

APRIL-JULY UNDEPLETED INFLOW TO GREEN MOUNTAIN RESERVOIR



■ Average ■ Min (2002) ■ Max (1984) ■ WY2008 ■ Proj 2009

Green Mountain Reservoir Releases

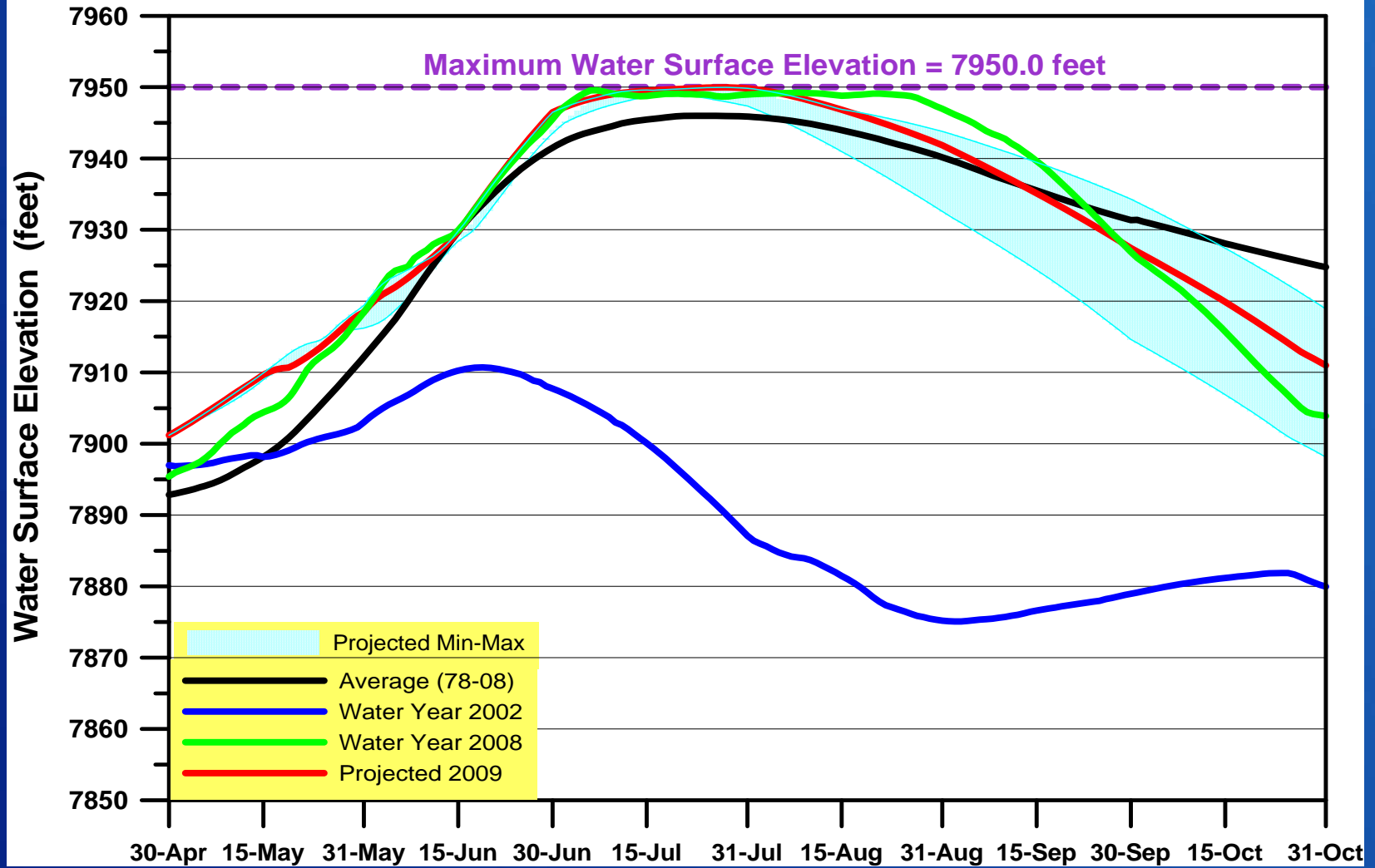


— Average (1978-2008)

— Projected 2009

RECLAMATION

GREEN MOUNTAIN RESERVOIR WATER SURFACE ELEVATION



RECLAMATION

Thank you.

Questions?



*Green Mountain Dam and Powerplant on
the Lower Blue*

RECLAMATION